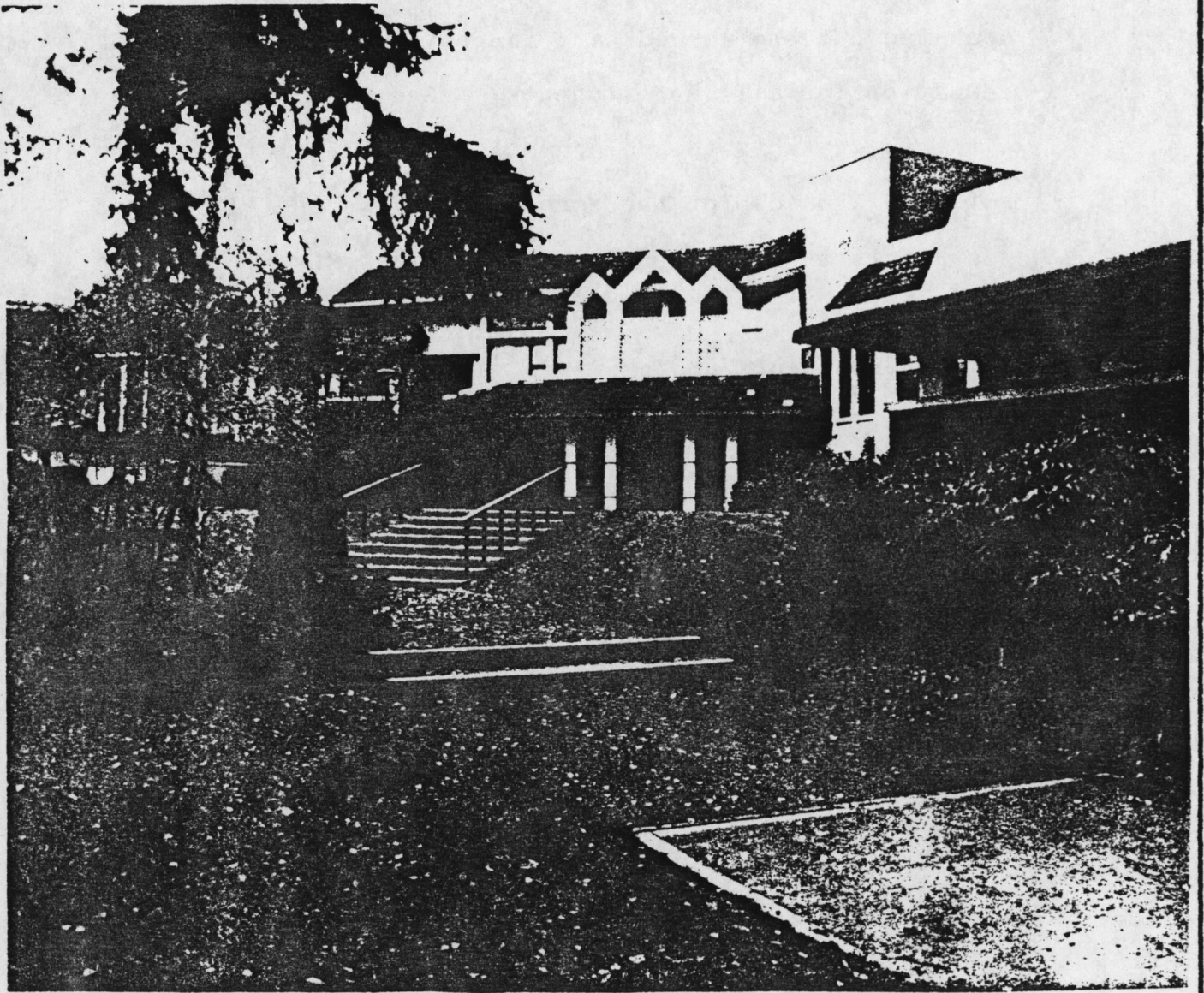




Queenswood House.



QUEENSWOOD HOUSE OF STUDIES

Another Montessori school was begun by the Sisters of St. Ann. It began operating on September 14, 1969 under the direction of Sister Sylvia Scott. The Montessori school was housed in a section of the majestic Queenswood House, 2494 Arbutus Rd. It had two spacious rooms and a hallway. There were washroom facilities close by for the students. There was a separate entrance for the comings and goings of students and parents. The outside play area for the children had an enclosed playground as well as a very spacious area of property for running and outdoor games.

During its first year of operation, there was an enrollment of 12 students and the monthly fee for each student was set at \$30.00. By 1974, the enrollment had increased to an average of 18 students and by 1978, the enrollment continued to increase to around 20 students. By 1978, the monthly fee had been increased to \$80.00 per student. 6

The Montessori School at Queenswood House of Studies closed its doors in June, 1978. The nuns who were originally involved in running the school were no longer there, and the space was needed for other purposes. However, the parents of the children who had been receiving their education there wanted the Montessori experiences to continue for their children. Consequently, an enthusiastic

group of parents went into action and founded the St. Christopher's Montessori School.

ST. CHRISTOPHER'S MONTESSORI SCHOOL

St. Christopher's Montessori School resides at 2619 Currie Road in Victoria. The school still operates under the Queenswood Montessori Society which these parents began. The parents are proud that they found a way for the school to continue its operation with the same traditions and philosophies as before.

The school opened in September, 1978, at 2619 Currie Rd. in Victoria. Mrs. Jean Prette was the first principal and held that position for four years. For the next two years, the school functioned with classroom head directresses, and no principal. In 1984, the Board of Directors appointed an Academic Principal, named Ann Stevens. She has been the principal for seven years and is still serving in this capacity. 7

The school site remained the same for ten years. Facilities were expanded in the summer of 1988 by developing the attic space, thus making a large multi-purpose room, plus a staff room, work room and a small classroom.

The student enrollment in 1978 was 63 children; this enrollment consists of students attending the school for a full day as well as students attending for only a half day.